

Accepted Manuscript

Spatio-temporal dynamics of working memory maintenance and scanning of verbal information

Toshimune Kambara, Erik C. Brown, Jeong-Won Jeong, Noa Ofen, Yasuo Nakai, Eishi Asano

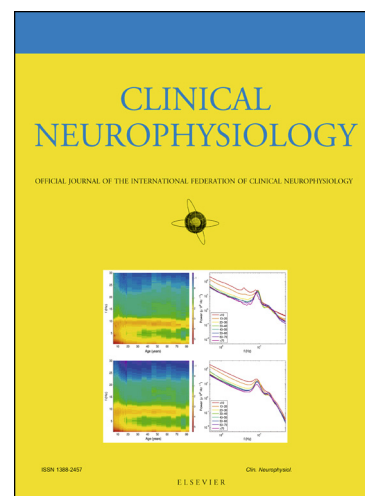
PII: S1388-2457(17)30092-5
DOI: <http://dx.doi.org/10.1016/j.clinph.2017.03.005>
Reference: CLINPH 2008087

To appear in: *Clinical Neurophysiology*

Received Date: 15 August 2016
Revised Date: 27 February 2017
Accepted Date: 4 March 2017

Please cite this article as: Kambara, T., Brown, E.C., Jeong, J-W., Ofen, N., Nakai, Y., Asano, E., Spatio-temporal dynamics of working memory maintenance and scanning of verbal information, *Clinical Neurophysiology* (2017), doi: <http://dx.doi.org/10.1016/j.clinph.2017.03.005>

This is a PDF file of an unedited manuscript that has been accepted for publication. As a service to our customers we are providing this early version of the manuscript. The manuscript will undergo copyediting, typesetting, and review of the resulting proof before it is published in its final form. Please note that during the production process errors may be discovered which could affect the content, and all legal disclaimers that apply to the journal pertain.



Spatio-temporal dynamics of working memory maintenance and scanning of verbal information

Toshimune Kambara, PhD ^{a,d,\$}; Erik C. Brown, MD, PhD ^{e,\$}; Jeong-Won Jeong, PhD ^{a,b};

Noa Ofen, PhD ^{a,c}; Yasuo Nakai, MD ^a; Eishi Asano, MD, PhD, MS ^{a,b,*}

^a Departments of Pediatrics, Children's Hospital of Michigan, Wayne State University, Detroit Medical Center, Detroit, MI, 48201, USA

^b Departments of Neurology, Children's Hospital of Michigan, Wayne State University, Detroit Medical Center, Detroit, MI, 48201, USA

^c Institute of Gerontology, Wayne State University, Detroit, MI, 48202, USA

^d Postdoctoral Fellowship for Research Abroad, Japan Society for the Promotion of Science (JSPS), Chiyoda-ku, Tokyo, 1020083, Japan

^e Department of Neurological Surgery, Oregon Health and Science University, Portland, OR, 97239, USA

*** Corresponding Author:**

Eishi Asano, MD, PhD, MS (CRDSA)

Professor of Pediatrics and Neurology & Medical Director of Neurodiagnostics

Division of Pediatric Neurology, Children's Hospital of Michigan, Wayne State University, 3901 Beaubien St., Detroit, MI, 48201, USA

Tel.: +1-313-745-5547

FAX: +1-313-745-0955

E-mail: eishi@pet.wayne.edu

متن کامل مقاله

دریافت فوری ←

ISIArticles

مرجع مقالات تخصصی ایران

- ✓ امکان دانلود نسخه تمام متن مقالات انگلیسی
- ✓ امکان دانلود نسخه ترجمه شده مقالات
- ✓ پذیرش سفارش ترجمه تخصصی
- ✓ امکان جستجو در آرشیو جامعی از صدها موضوع و هزاران مقاله
- ✓ امکان دانلود رایگان ۲ صفحه اول هر مقاله
- ✓ امکان پرداخت اینترنتی با کلیه کارت های عضو شتاب
- ✓ دانلود فوری مقاله پس از پرداخت آنلاین
- ✓ پشتیبانی کامل خرید با بهره مندی از سیستم هوشمند رهگیری سفارشات